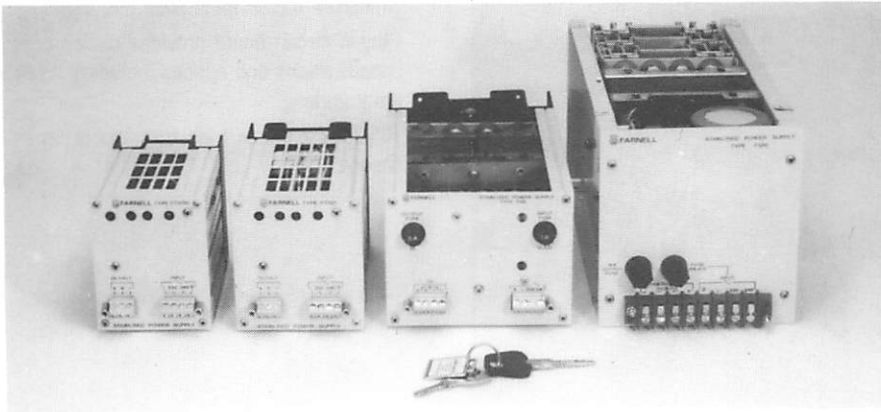


MODULAR POWER SUPPLIES

linear power supplies F Series



Low cost

Compact design – all units under 5¼" panel height

Quality components

Good performance

Ideal for OEM use

The F series power supplies are low cost, compact units ideal for OEM use. They accept a nominal a.c. mains input and provide a regulated d.c. output – single and dual output versions being available.

The 5V single output units are suitable for general applications; for example, as power sources for low frequency CMOS/TTL I/C logic systems as used in digital instruments, remote monitoring equipment, computer peripherals, etc., where reasonable noise immunity is required. 12V and 15V (5-15V) models are available for similar use in industrial control applications where a higher noise immunity over-

rides the need for minimum current consumption. The 12, 15, 24 and 30V models are of course suitable for a wide range of purposes.

Dual output units, nominally 15-0-15V, are provided for powering operational amplifiers. The outputs are floating with respect to earth and are adjustable 12-15V. One output tracks the other and the amount of offset between them can be varied within the adjustment range.

All the 5V models feature built-in overvoltage crowbar protection. Overload and short circuit protection is ensured by foldback current limiting

which helps to minimise heat dissipation. All models have mains and output fuses.

The F series power supplies are a cost effective solution to the original equipment manufacturer's dilemma – to build or buy? Quality components and optimised design and production techniques have been combined to ensure reliability and lower costs.

Mains input

A.C. mains 220, 240V $\pm 10\%$, 50-400Hz

Output

Voltage and current rating and package size shown in table

Load regulation

Output change for a zero to full load change:
 5mV (single outputs) 10mV (twin outputs)

Line regulation

Output change for a $\pm 10\%$ mains change:
 5mV (single outputs) 10mV (twin outputs)

Ripple

3mV pk-pk (singles) 2mV (twins)

Temperature coefficient

0.02% per $^{\circ}\text{C}$ typical

Operating ambient temperature range

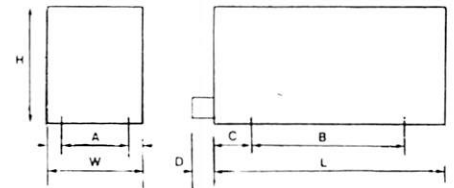
0°C to 60°C

Storage temperature range

-40°C to $+75^{\circ}\text{C}$

Dimensions (mm)

PACKAGE	H	W	L	A	B	C	D	FIXING SCREWS	Max.	WEIGHT (kg)
A	90	72	121.5	59.3	68	12	14	M3 \times 6		1.3
B	90	81	148	68.3	88	12	14	M3 \times 6		2
C	90	117	210	104.3	104	41	14	M3 \times 6		3.6
D	132	125.5	263	113	200	41	18	No. 6 \times 16 Self tap		5.9



Units available

Single output units

Nominal d.c. output	Trim range	Current	Crowbar	Package	Model Number	Order code
5V	+0.5V	3A	YES	B	F5-3	12F0503
5V	+0.5V	5A	YES	C	F5-5	12F0505
12V	+0.5V	5A	NO	C	F12-5	12F125
15V	5-15V	2A	NO	B	F15-2	12F152
24V	+0.5V	2.5A	NO	C	F24-2	12F242

Twin output units

15-0-15V	12-15V	1A	NO	B	FT15-1	12FT151
15-0-15V	12-15V	2A	NO	C	FT15-2	12FT152

ORDER CODE: see table